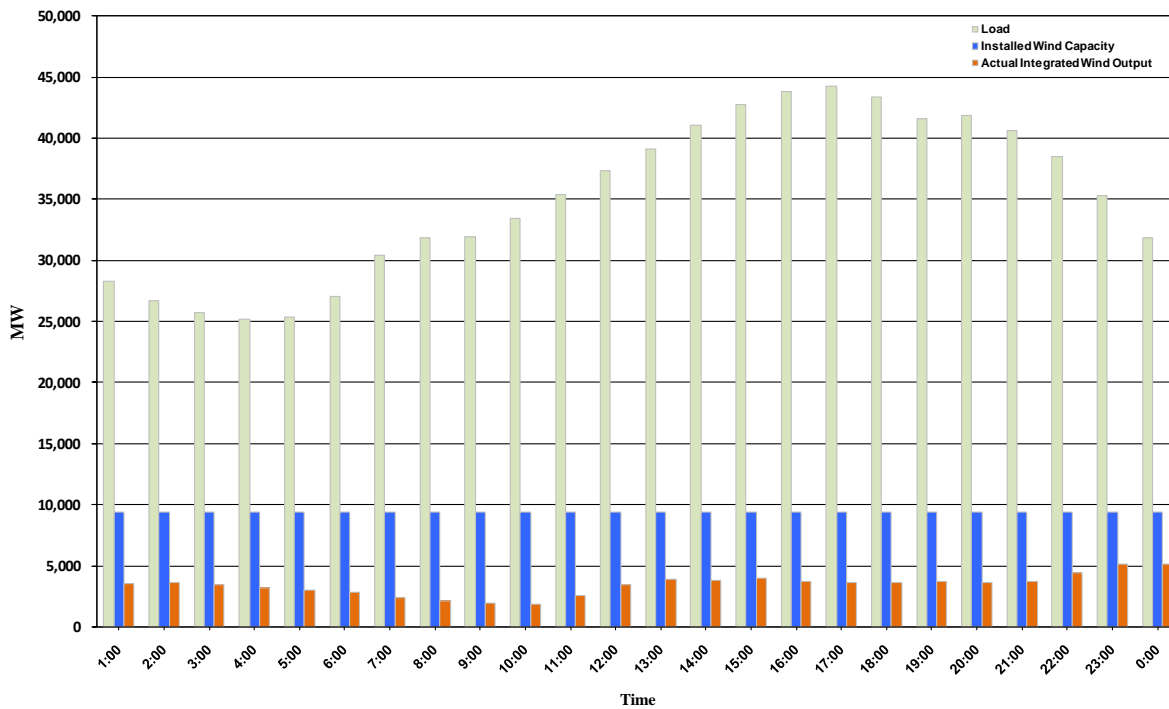




## ERCOT Grid Operations Wind Integration Report: 10/21/10

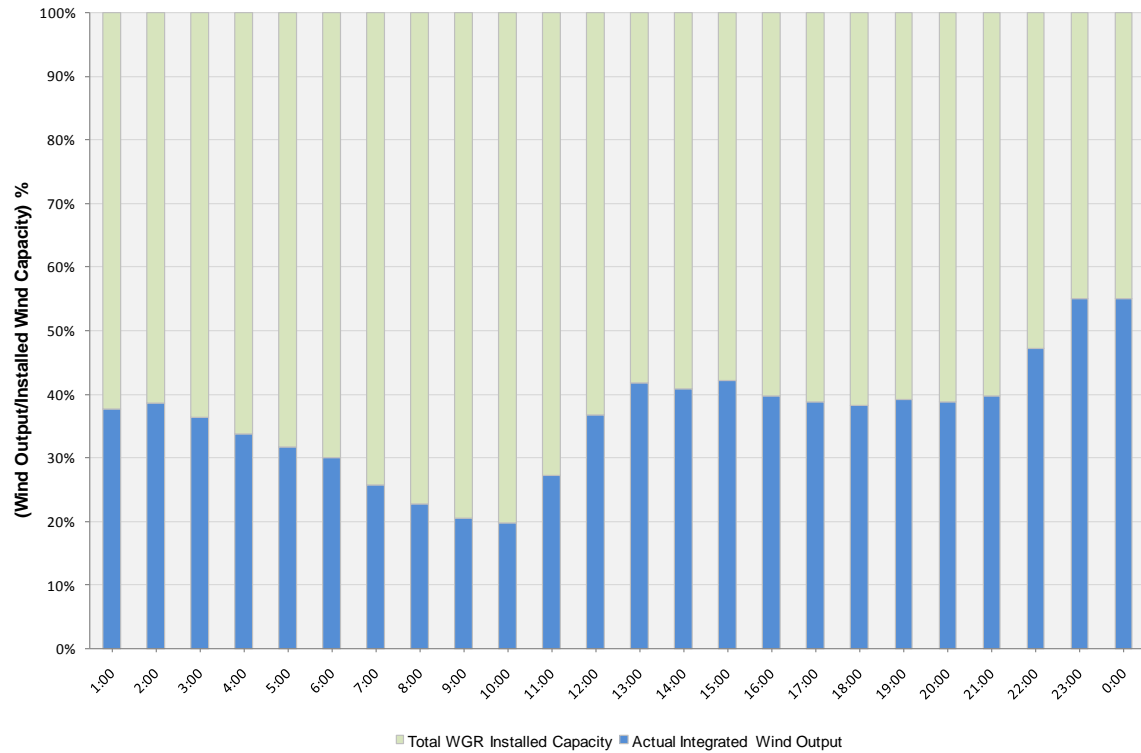
Peak Load	44,228 MW
Load Peak Hour	17
Wind Record 06/12/10	7016 MW
Max Wind value	5511 MW
Wind Peak Hour	23:04:48
Wind Integration %	16.51

Hourly Average Actual Load vs. Actual Wind Output  
10-21-2010

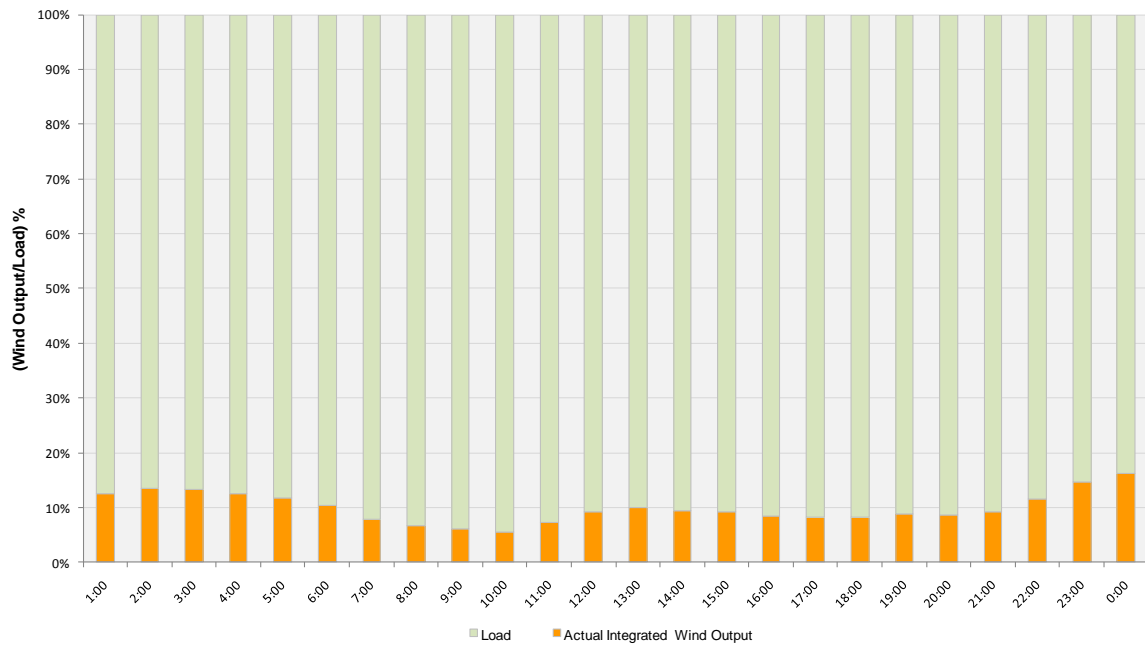




**Actual Wind Output as a Percentage of the Total Installed Wind Capacity**  
**10-21-2010**



**Actual Wind Output as a Percentage of the ERCOT Load**  
**10-21-2010**





ERCOT Load vs. Actual Wind Output 10/14/10 - 10/21/10

